

# Multi-proxy reconstruction of Eastern Alpine Holocene climate


Progetto d'Interesse "NextDATA"  
topic 6



Jacopo Gabrieli, Carlo Barbante

Consiglio Nazionale delle Ricerche (CNR)  
Istituto per la Dinamica dei Processi Ambientali

Roma, 12 Novembre 2013

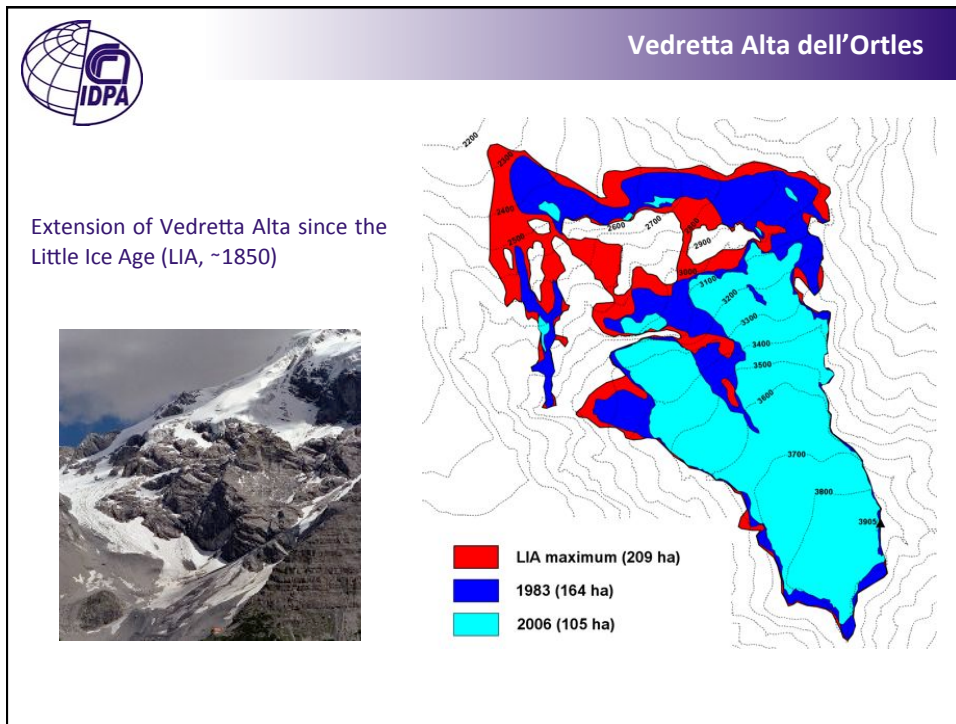


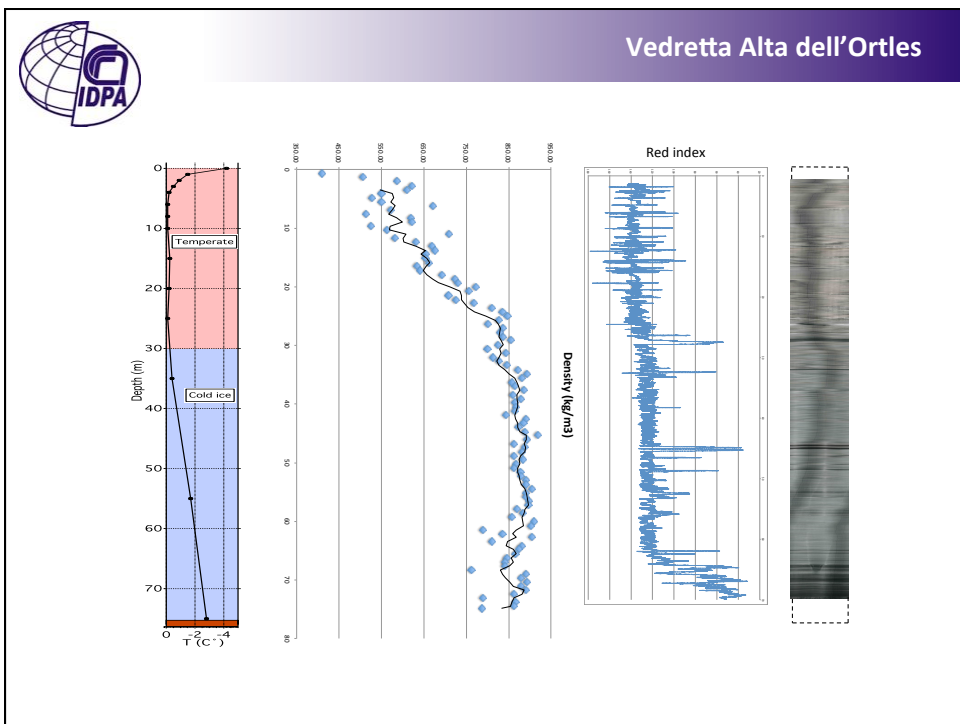
Vedretta Alta dell'Ortles

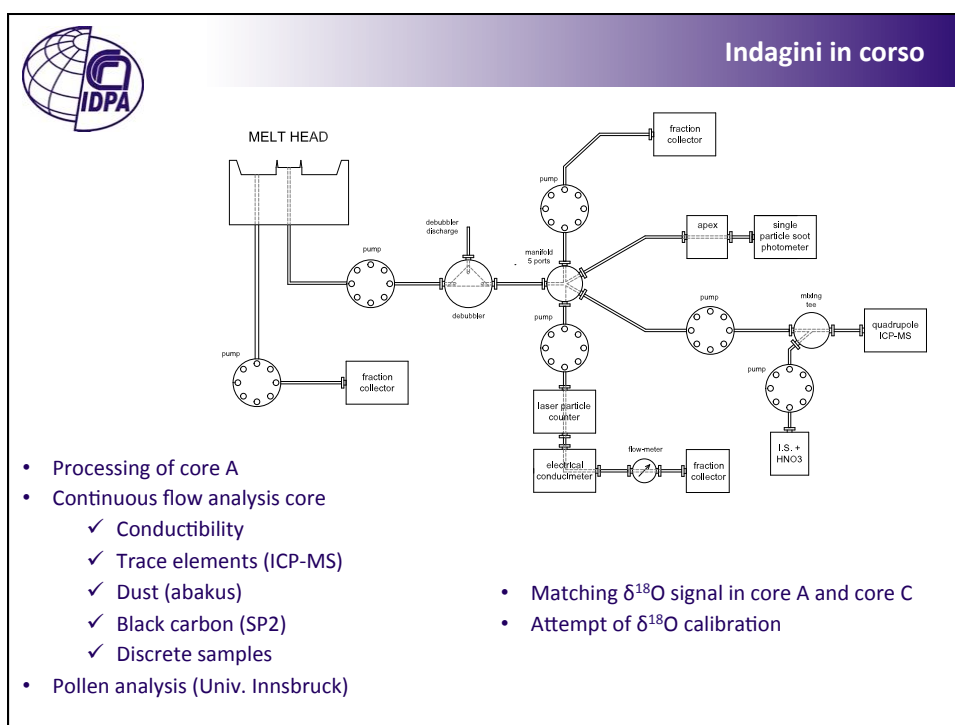
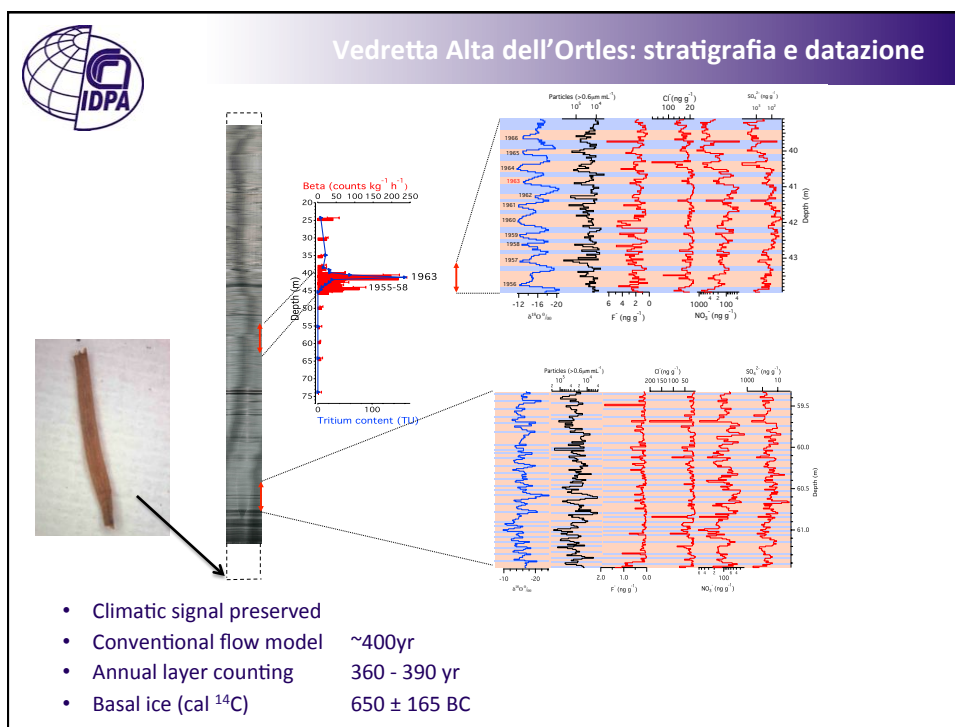


<p><b>Vedretta Alta</b></p> <p>Surface (2006): 105 ha          Maximum elevation: 3905 m          Minimum elevation: 3018 m          Average elevation: 3535 m          Exposure: NW          Average slope: 29°</p>	<p><b>Climatology</b></p> <p>Precipitation (valley floor, 1900 m): <b>750 mm y<sup>-1</sup></b>          Annual air temperature (3850 m): <b>-9°C</b></p>
--	---

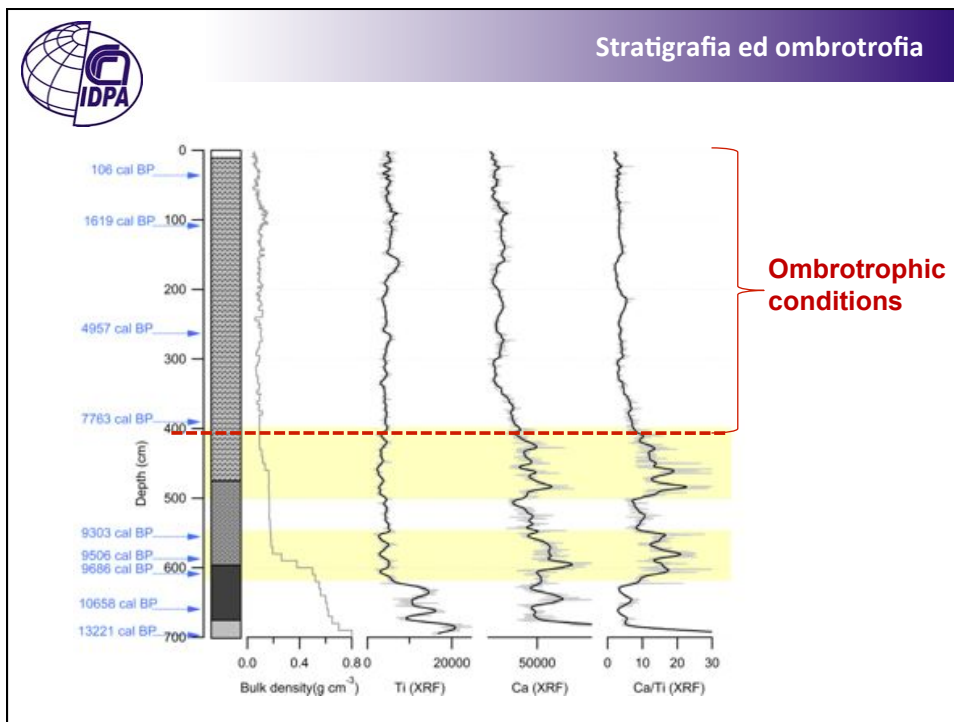
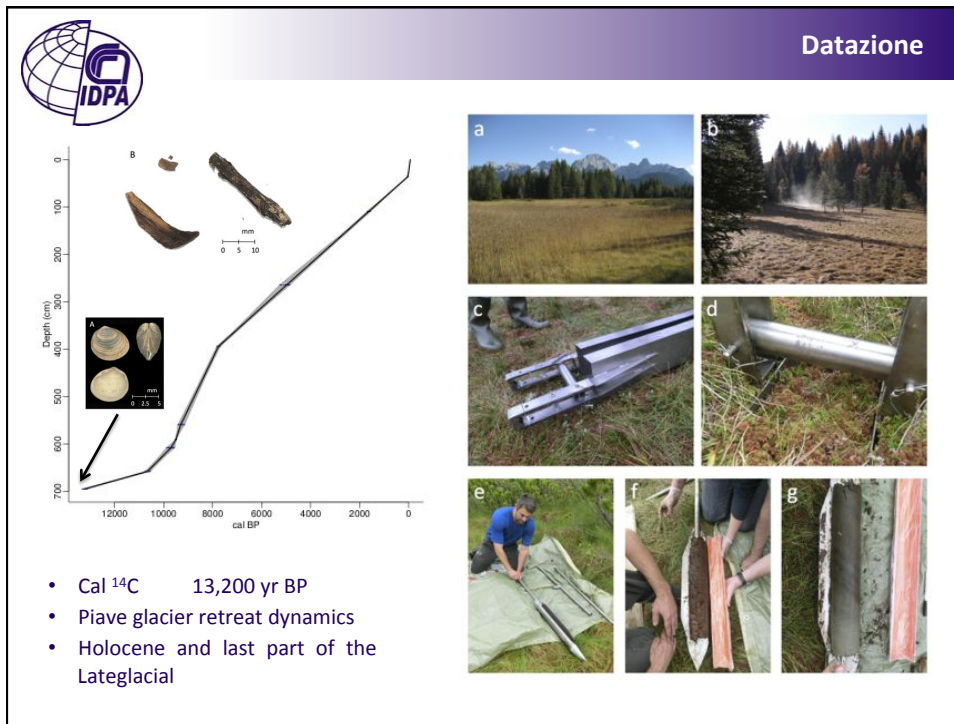


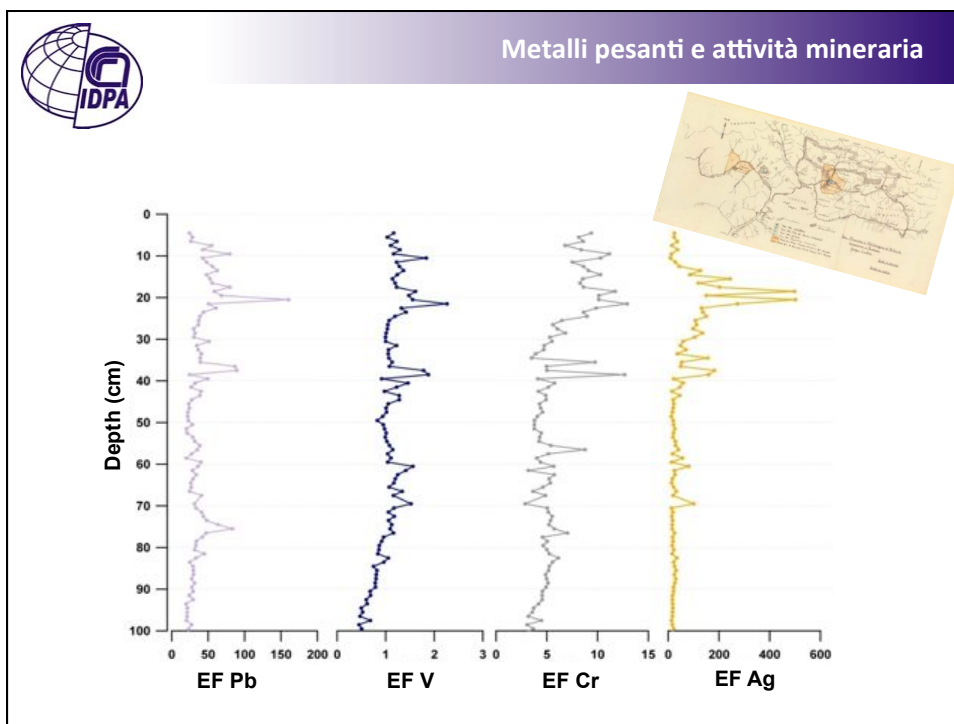
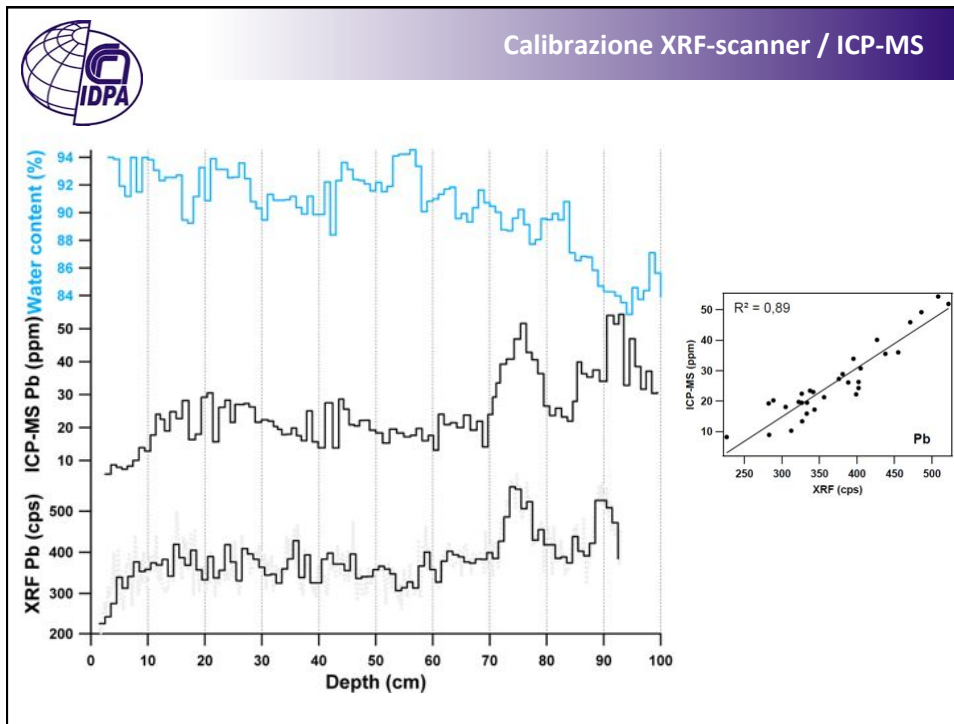












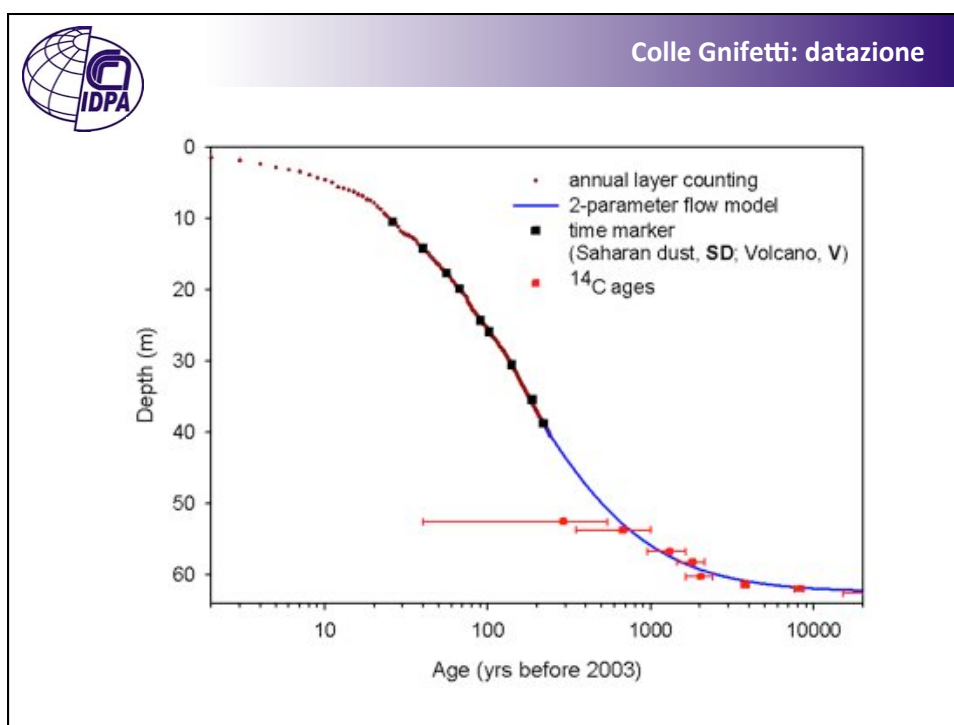
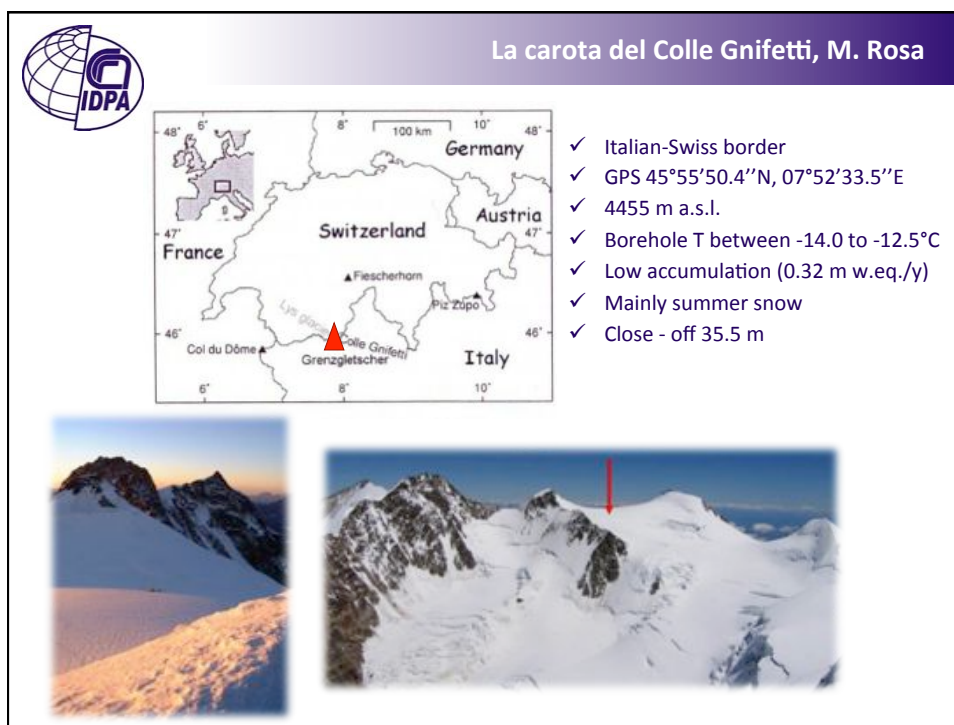


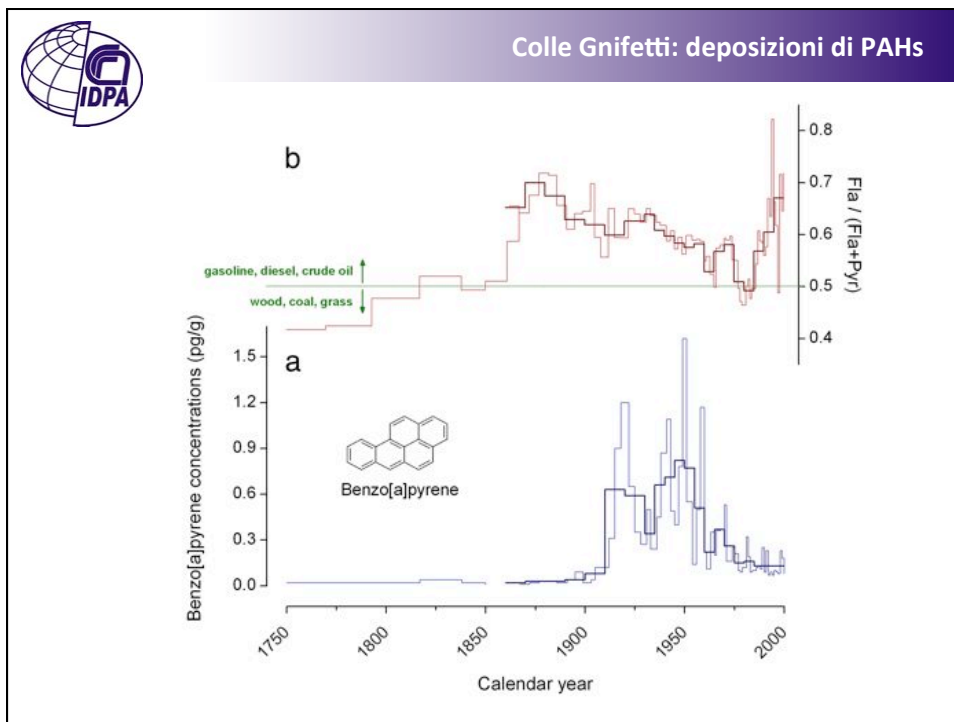
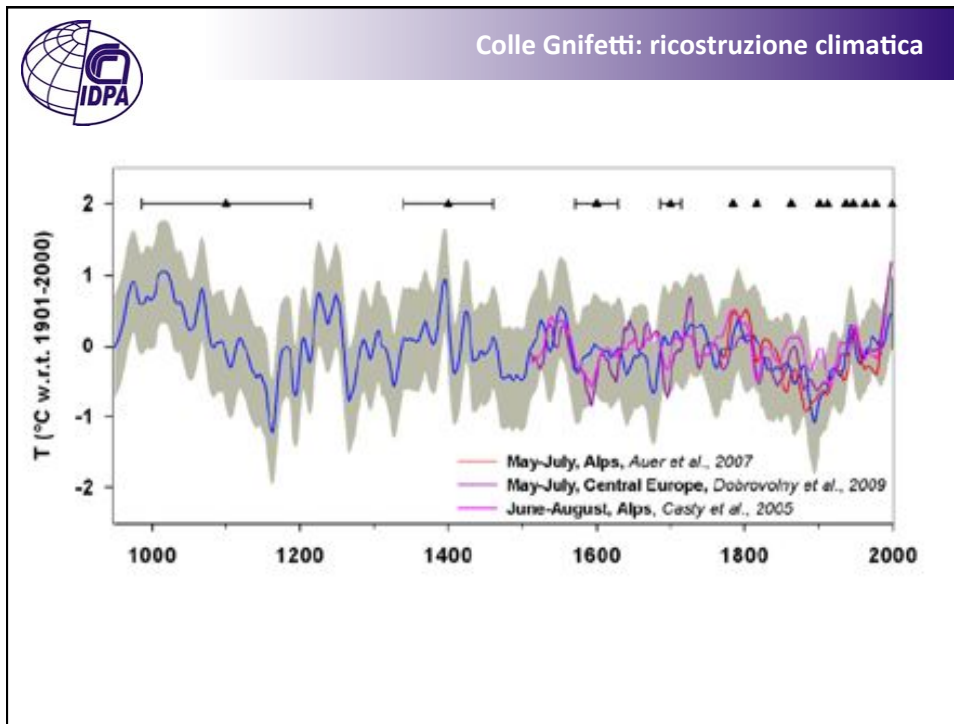
## Torbiere del Bellunese: lavori in corso

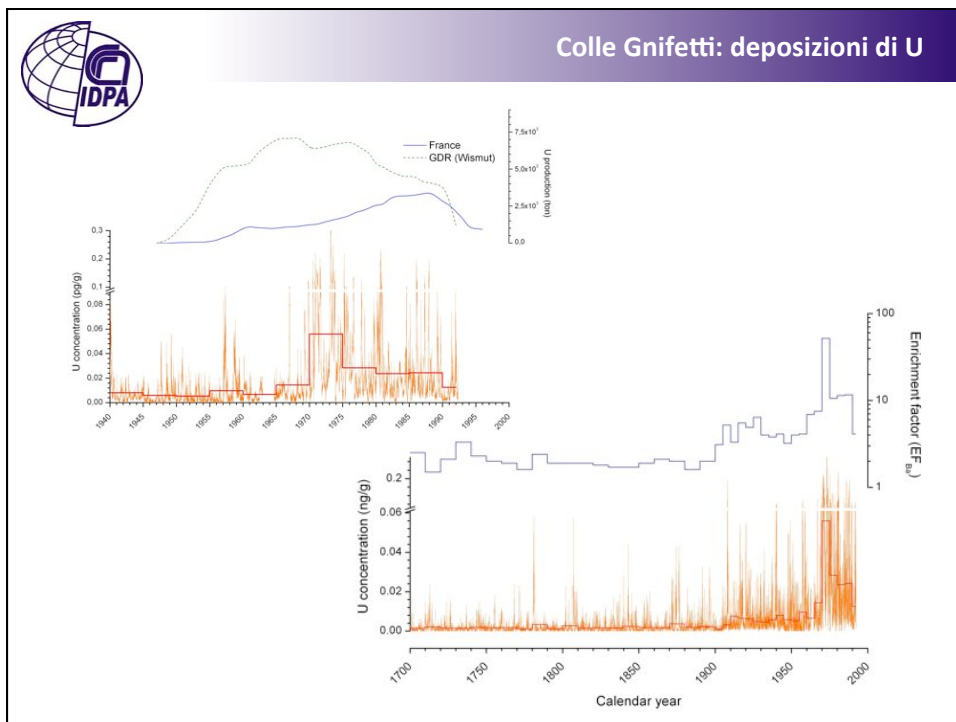
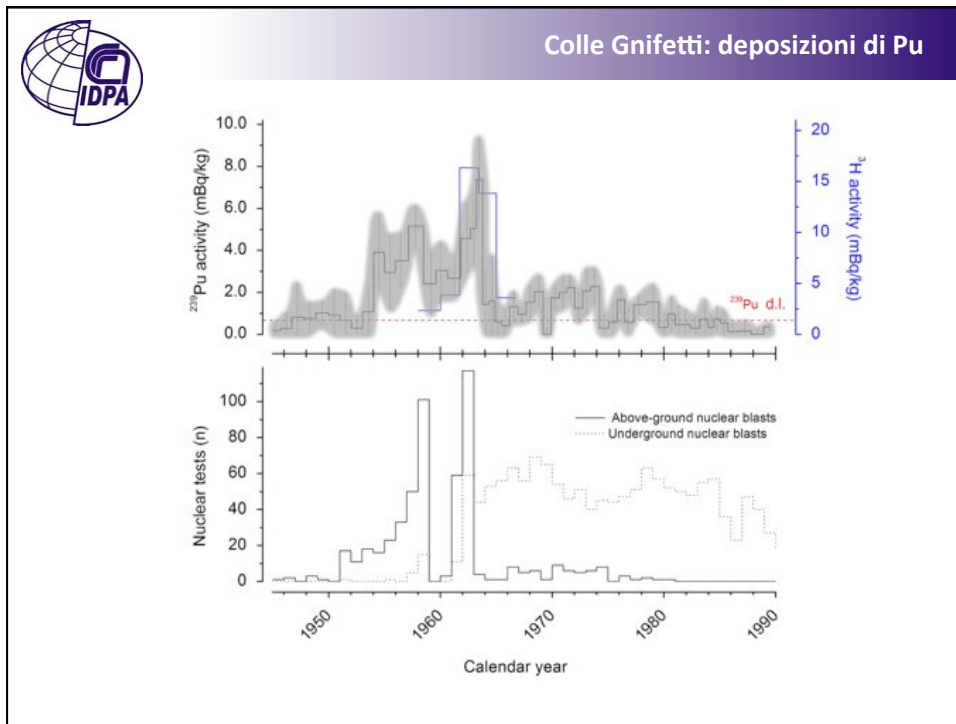
- Pollen analysis in Danta core
- Processing and analysis of Coltrondo core (1810m a.s.l.)
  - ✓ Bulk density, ash
  - ✓ Pore water chemistry
  - ✓ Trace and rare earth elements
  - ✓ Pollen and charcoal
- Stable isotopes
  - ✓ Bulk samples
  - ✓ Pollen / diatoms
  - ✓ Lipids











 Un nuovo sito di carotaggio: Grand Combin



4313m (1517m) Grand Combin de Grande Joraz

Grazie per l'attenzione!



 Jacopo Gabrieli  
gabrieli@unive.it  
Consiglio Nazionale delle Ricerche (CNR)  
Istituto per la Dinamica dei Processi Ambientali